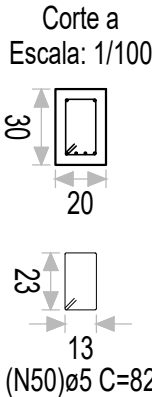
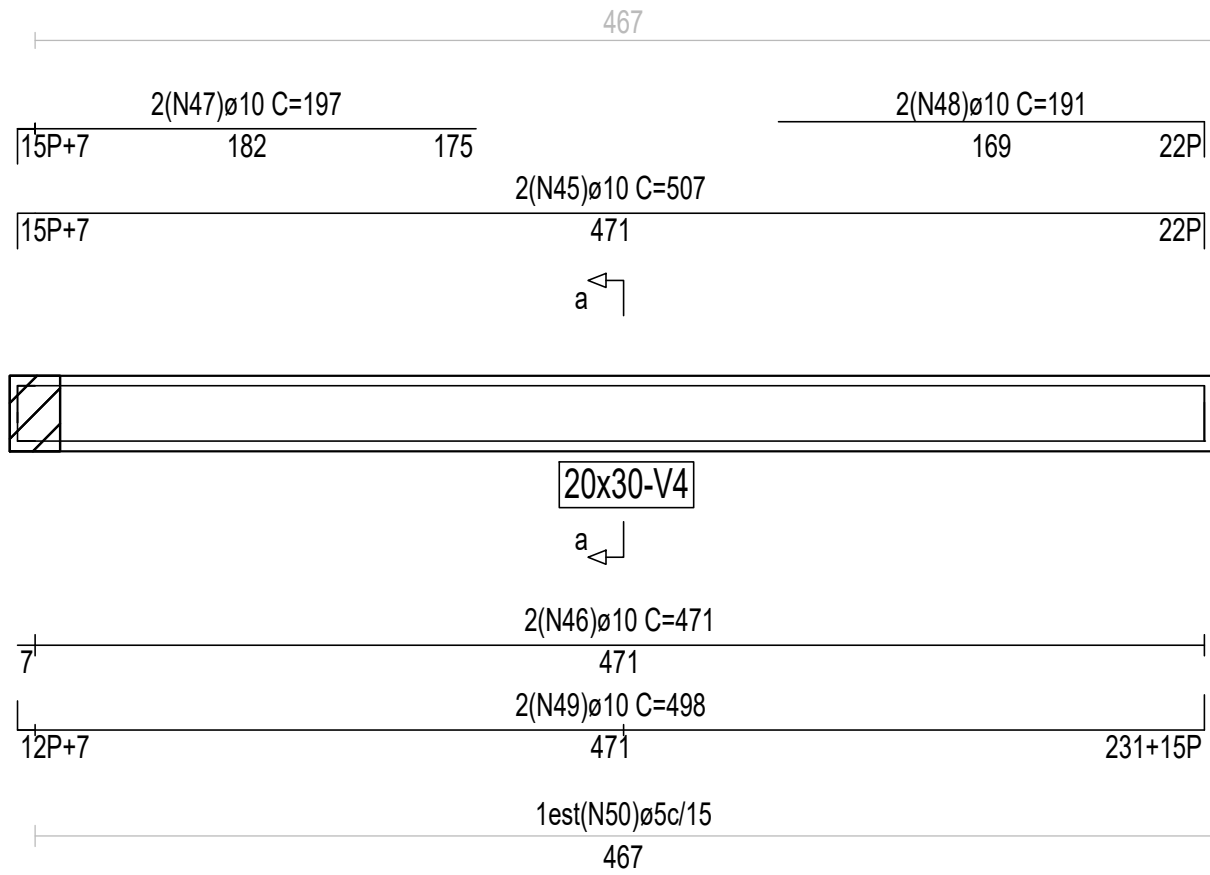
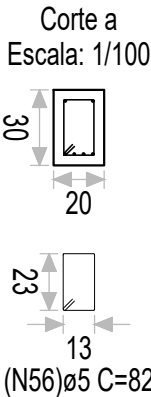
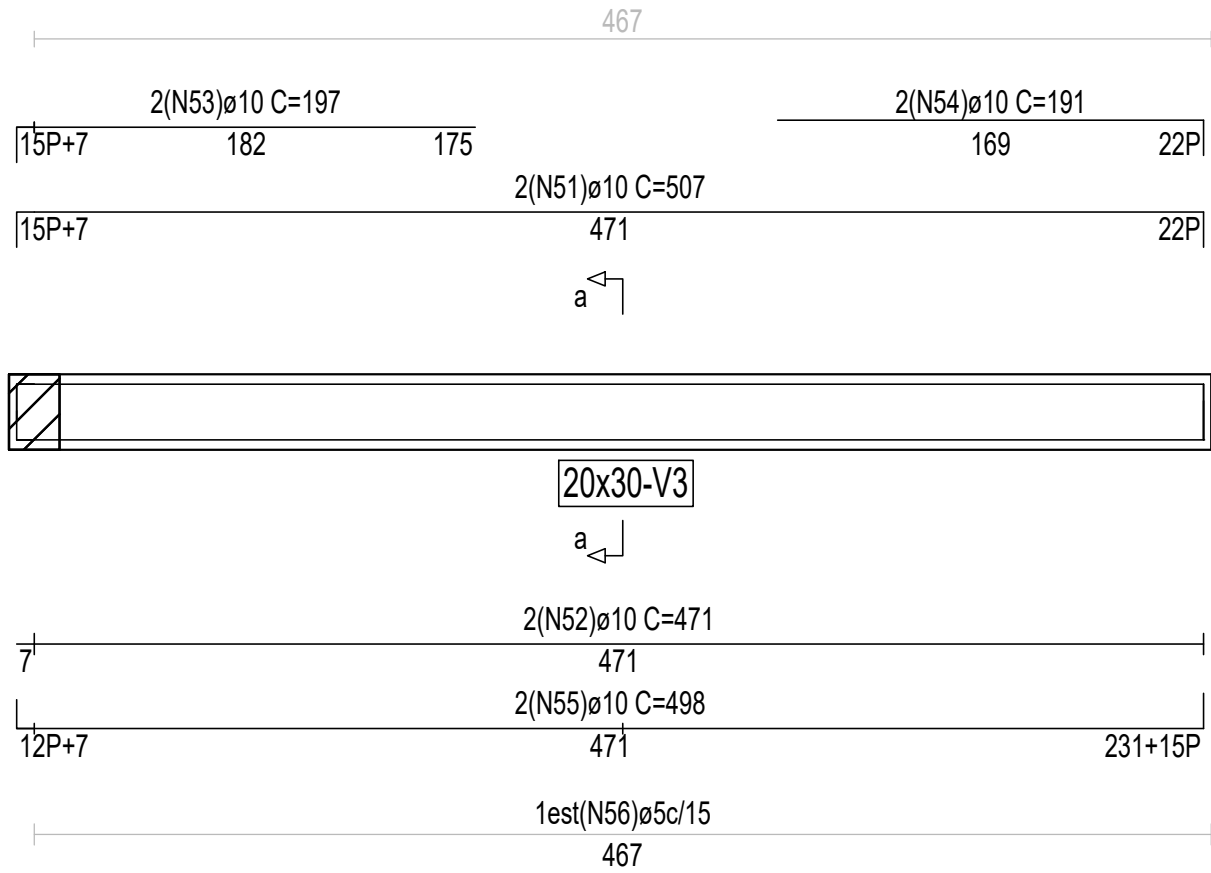


V4



V3



Barra	ID	Qt.	Diâm.	Comprimento unitário (cm)				Total	
				P	C. Reto	P	C. Total	(cm)	(kg)
Vigas do pórtico				Aço CA-50 N 5098 Kg/cm2					
V4	45	2	ø10	15	471	22	508	1016	6,654
	46	2	ø10		471	471	942	5,994	
	47	2	ø10	15	182	197	394	2,507	
	48	2	ø10		169	22	191	382	2,431
	49	2	ø10	12	471	15	498	996	6,337
	50	32	ø5				82	2624	4,174
Total+10,0%								30,697	

Barra	ID	Qt.	Diâm.	Comprimento unitário (cm)				Total	
				P	C. Reto	P	C. Total	(cm)	(kg)
Vigas do pórtico				Aço CA-50 N 5098 Kg/cm2					
V3	51	2	ø10	15	471	22	508	1016	6,464
	52	2	ø10		471		471	942	5,994
	53	2	ø10	15	182		197	394	2,507
	54	2	ø10		169	22	191	382	2,431
	55	2	ø10	12	471	15	498	996	6,337
	56	32	ø5				82	2624	4,174
Total+10,0%								30,697	

TOTAL AÇO VIGA BALDRAME

Total+10,0% (kg)	
Aço CA-50 N 5098 Kg/cm2	
ø5	87,234
ø10	562,038
Total	649,272

FECHAMENTO E REFORMA DA QUADRA DE ESPORTE JARDIM PARQUE INDUSTRIAL

DETALHADOS :
DETALHES DAS ARMADURAS DAS VIGAS BALDRAMES
ESCALA 1 : 30
ART N° 28027230200645021
09/12